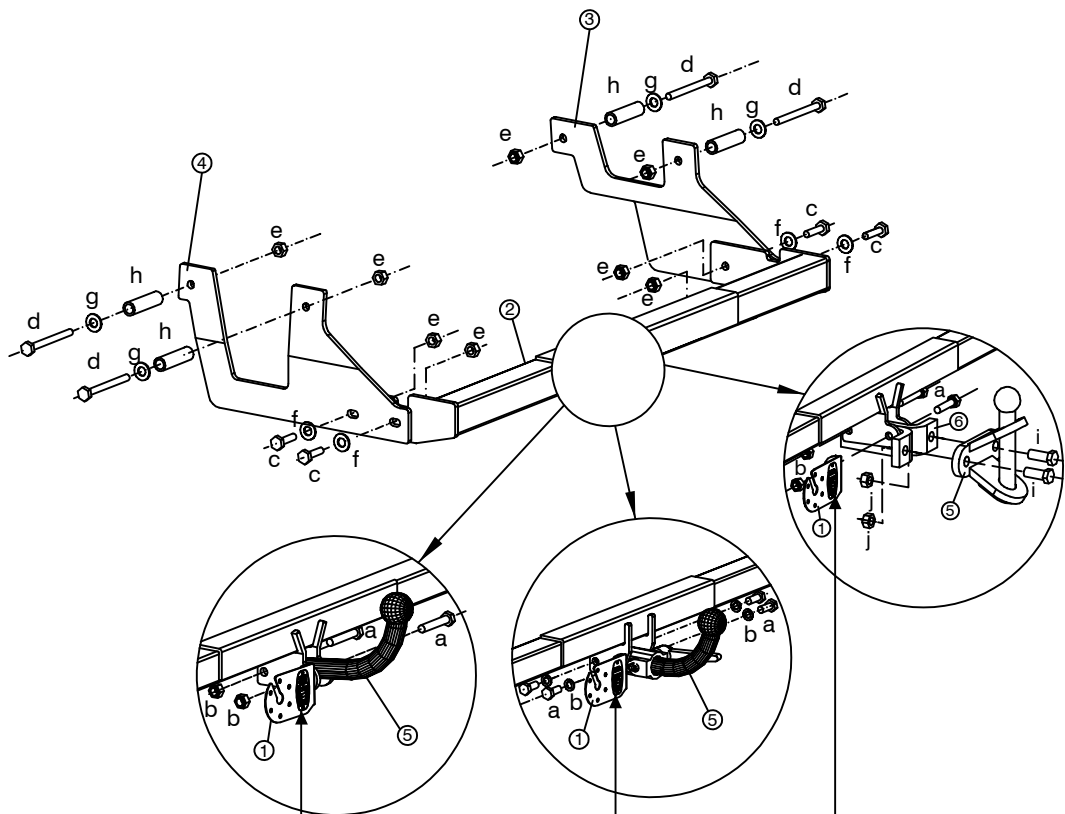


DACIA DOKKER + STEPWAY
RENAULT EXPRESS



Made by LAFUENTE (SPAIN)
TEL: (+34) 952 625 840
www.lafuente.eu

E9 55R - 01 2051

TIPO EE0445 D 8,10 kN
CLASE A-50X S 90 kg

E9*55R01/09*2051*01

Made by LAFUENTE (SPAIN)
TEL: (+34) 952 625 840
www.lafuente.eu

E9 55R - 01 2052

TIPO EE1445 D 8,10 kN
CLASE A-50X S 90 kg

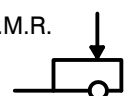

E9*55R01/09*2052*01

Made by LAFUENTE (SPAIN)
TEL: (+34) 952 625 840
www.lafuente.eu

E9 55R - 01 2053

TIPO EE3445 D 8,10 kN
CLASE A-50X S 90 kg


E9*55R01/09*2053*01

M.M.R. 	S 	D
1.400 kg.	90kg.	8,10 kN

Par de apriete para los tornillos Tightening torque for bolts Schrauben Drehmoment Couple de serrage pour vis						
mm	6	8	10	12	14	16
Nm	10	25	55	85	135	200

Enganche homologado según Reglamento nº 55 CEPE
Hitch officially approved in accordance with Regulation nº 55 CEPE
Geprüfte Kupplung gemäß Reglement nº 55 CEPE
Crochet homologué selon la Règlementation nº 55 CEPE

ELEMENTOS DE UNIÓN / CONNECTION COMPONENTS
DAZUGEHÖRENENDEN TEILEN / ÉLÉMENTS DE RACCORD

BOLA / BALL / KUGEL / BOULE		VEHÍCULO / VEHICLE FAHRZEUG / VÉHICULE	
		c	4 x M10x40 DIN 931 8.8
		d	4 x M10x110 DIN 931 8.8
a	2 x M12x65 DIN 931 8.8	e	8 x M10 DIN 985 8
b	2 x M12 DIN 985 8	f	4 x M10 DIN 9021 -
		g	4 x M12 DIN 9021 -
		h	4 x CASQUILLO Ø21.5x3x75 -
a	4 x M12x25 DIN 933 8.8		
b	4 x M12 DIN 125 -		
a	2 x M16x50 DIN 933 8.8	i	2 x M12x65 DIN 931 8.8
b	2 x M16 DIN 985 8	j	2 x M12 DIN 985 8

Este documento debe ser presentado en la I.T.V. junto con el certificado de montaje.
HNOS.SÁNCHEZ-LAFUENTE,S.A. no asume ningún tipo de responsabilidad por daños
causados por usos inadecuados.



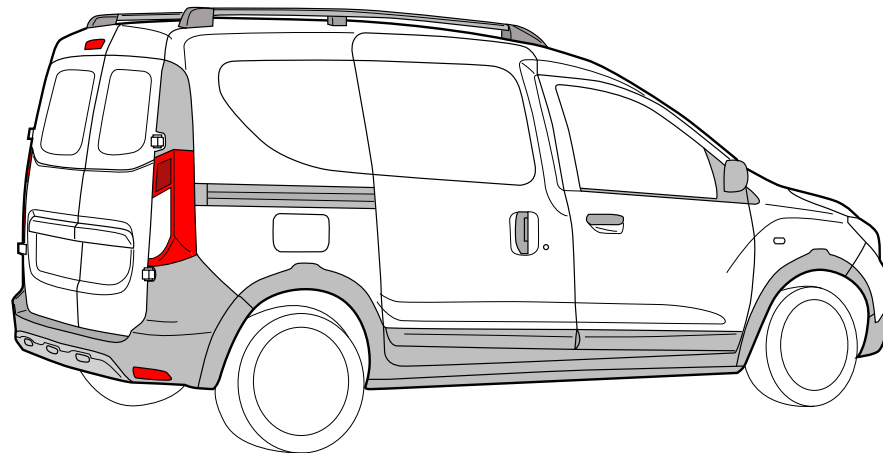
EE0445



EE1445



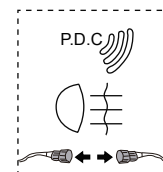
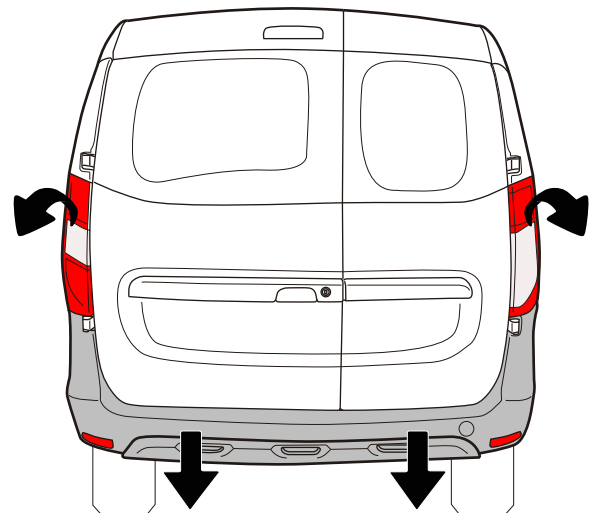
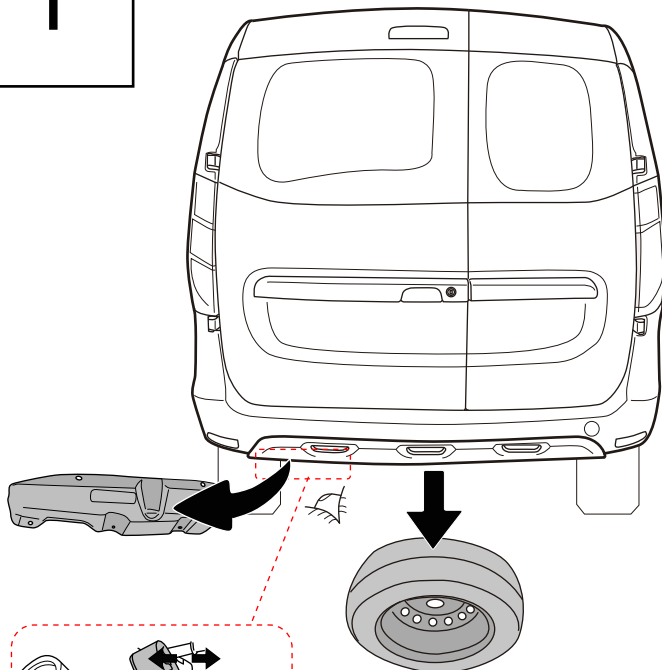
EE3445



DACIA DOKKER / DOKKER STEPWAY RENAULT EXPRESS

Instrucciones de montaje - Installation instructions - Notice de montage - Montage- og driftsvejledning

1

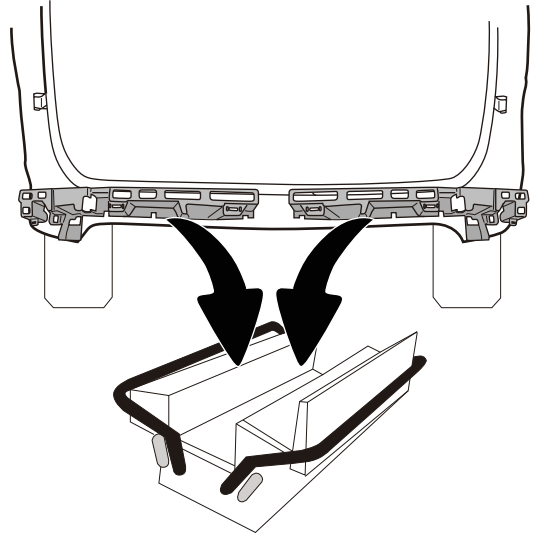
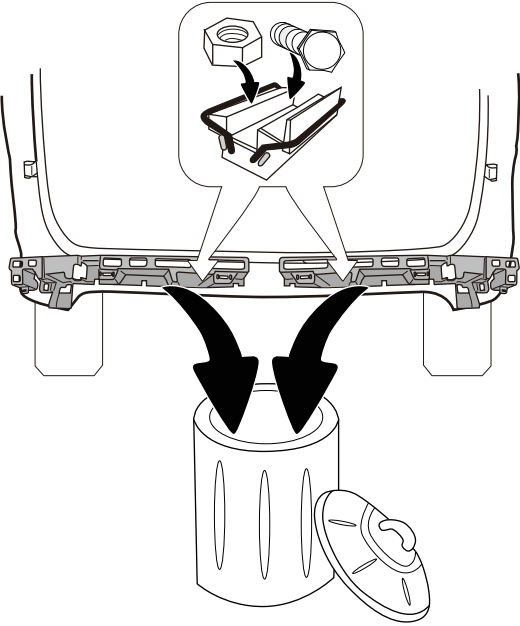


2

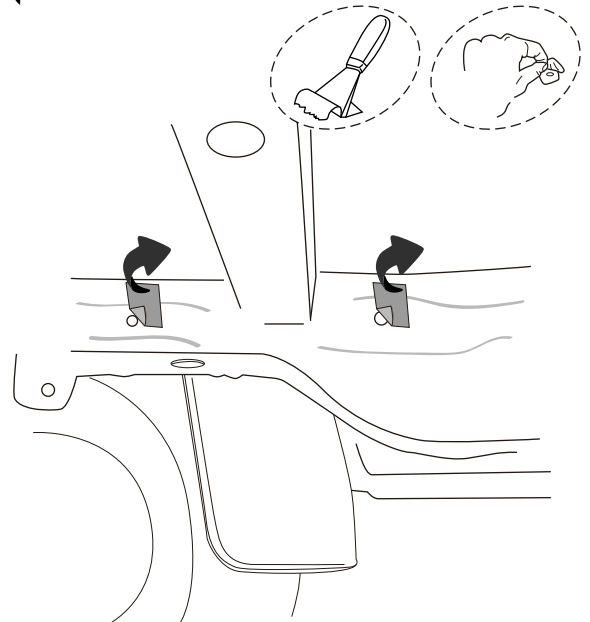
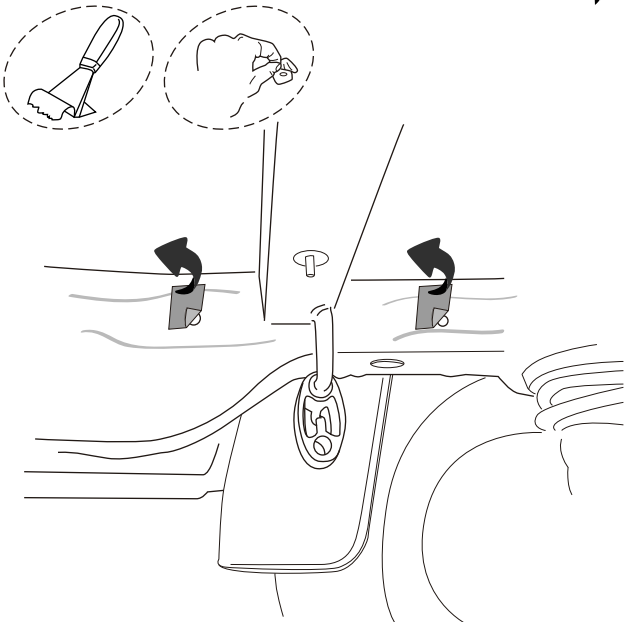
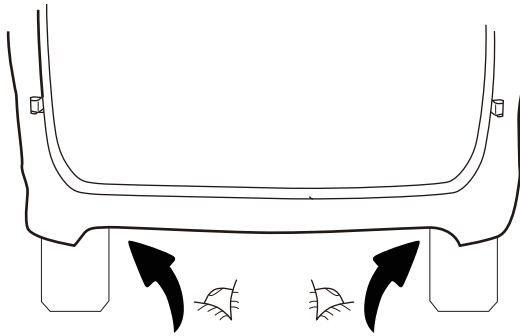
DACIA DOKKER

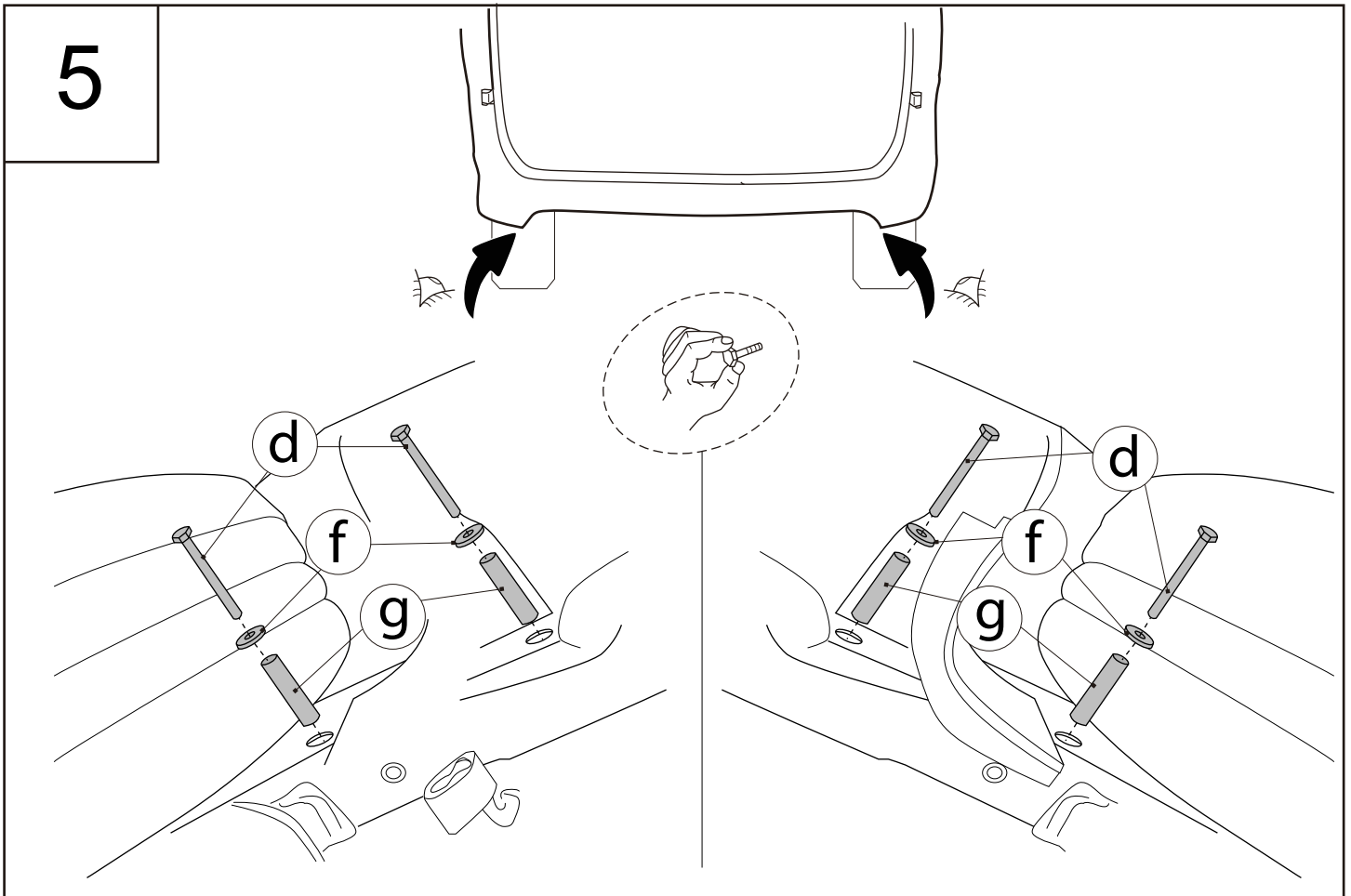
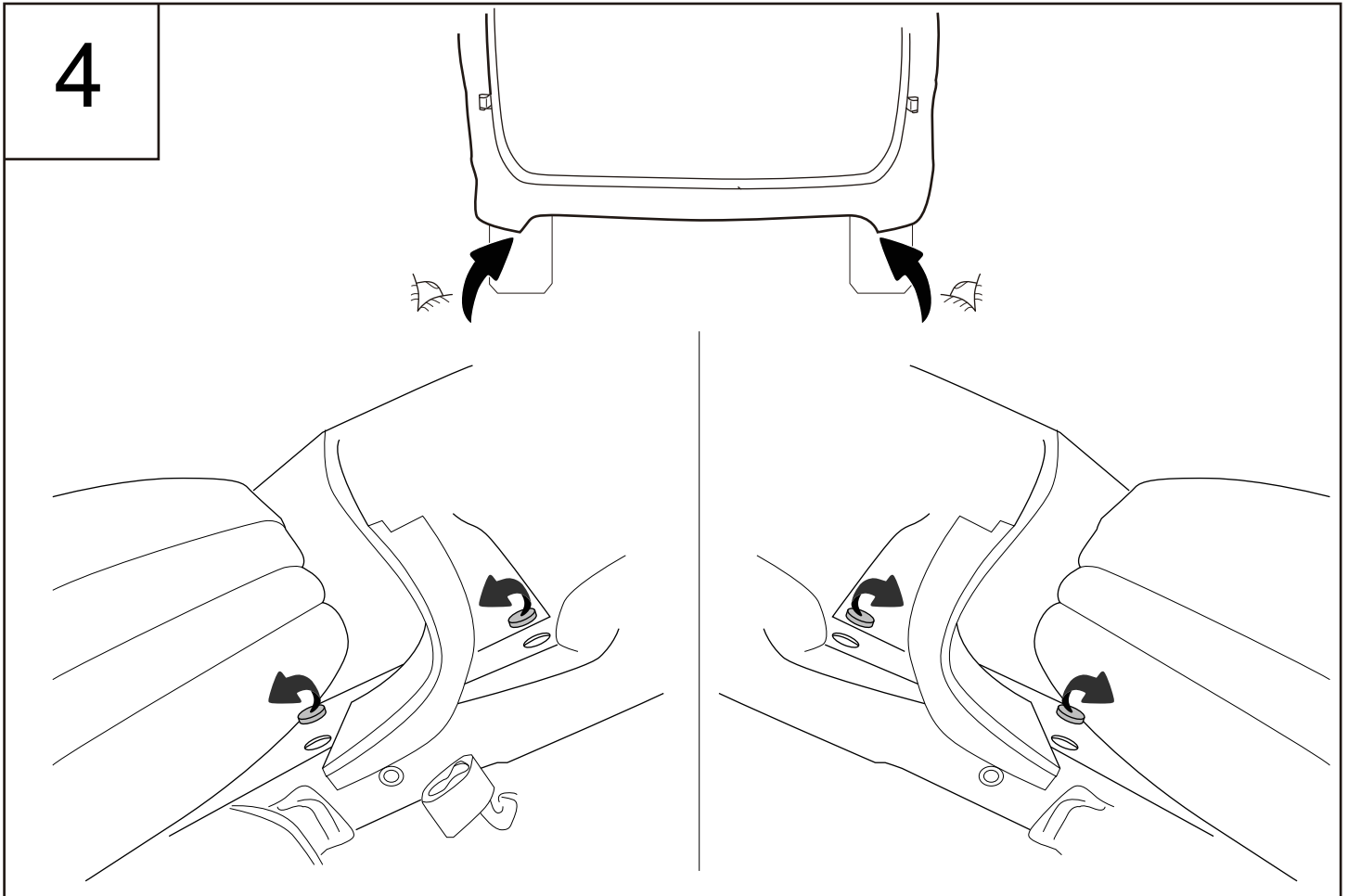


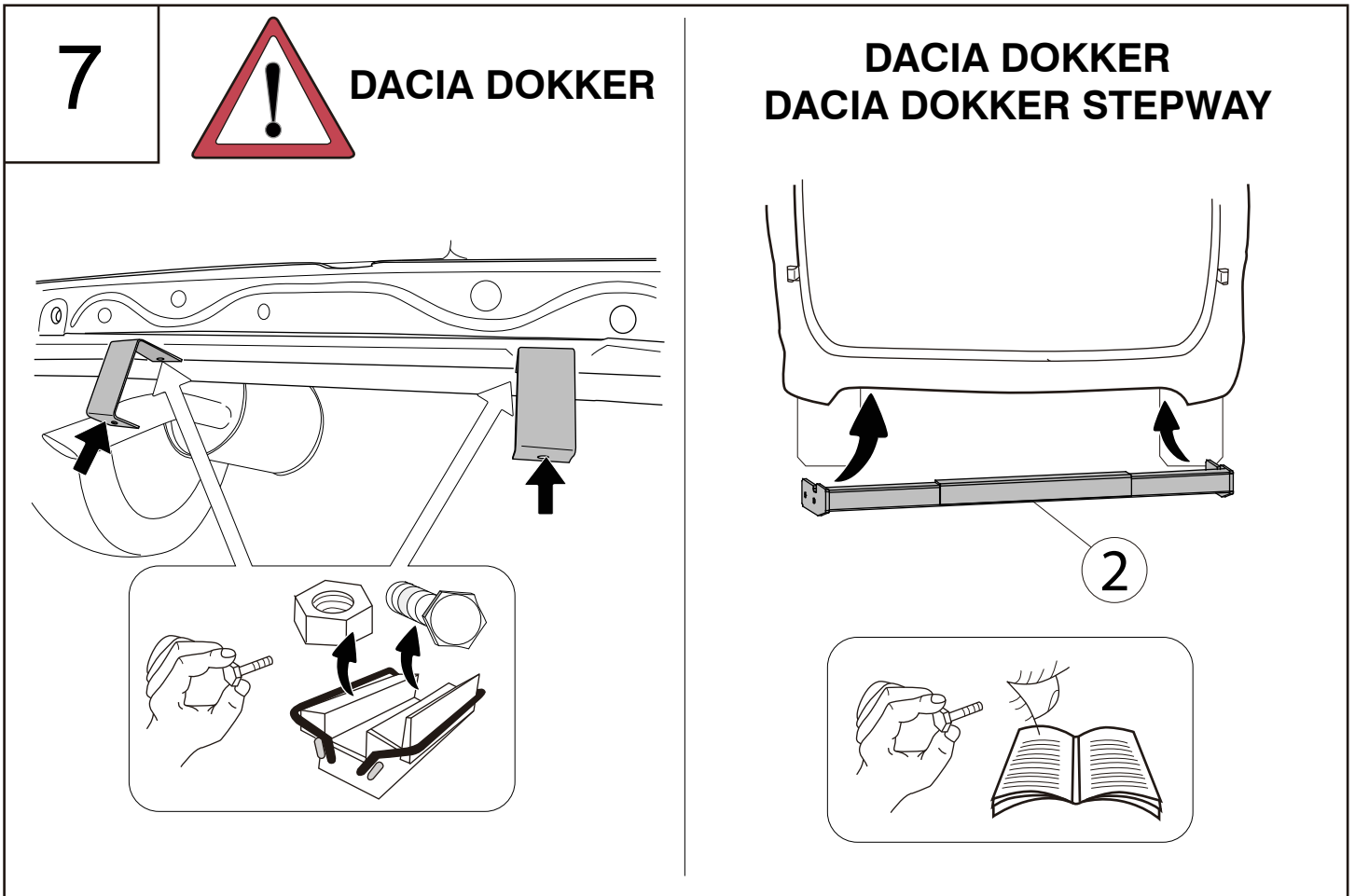
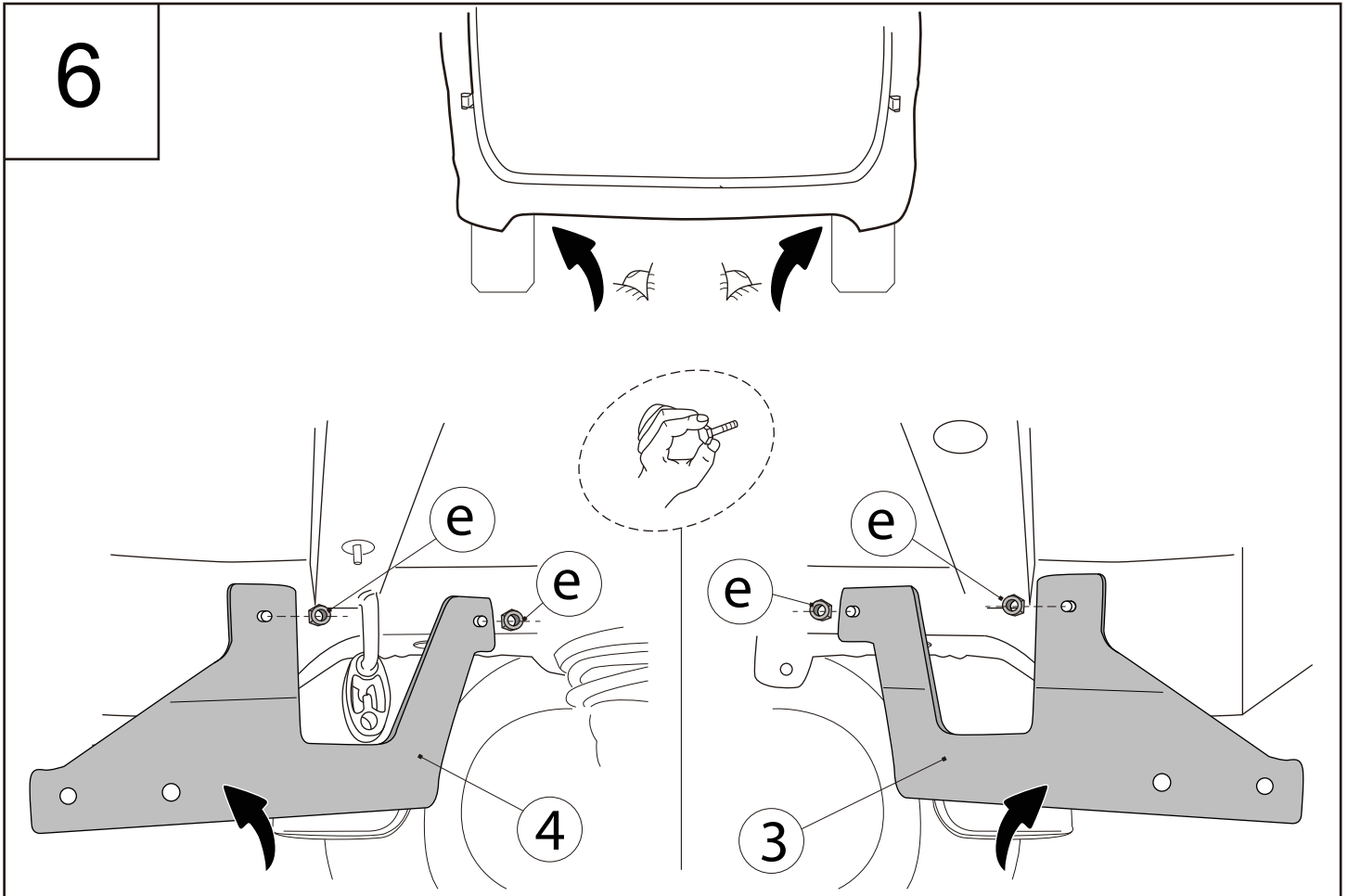
DACIA DOKKER STEPWAY



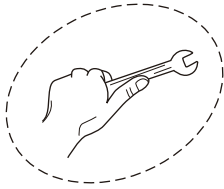
3




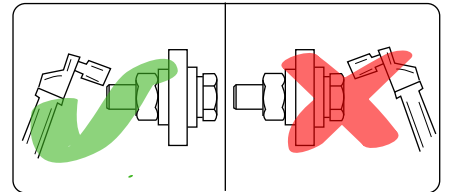
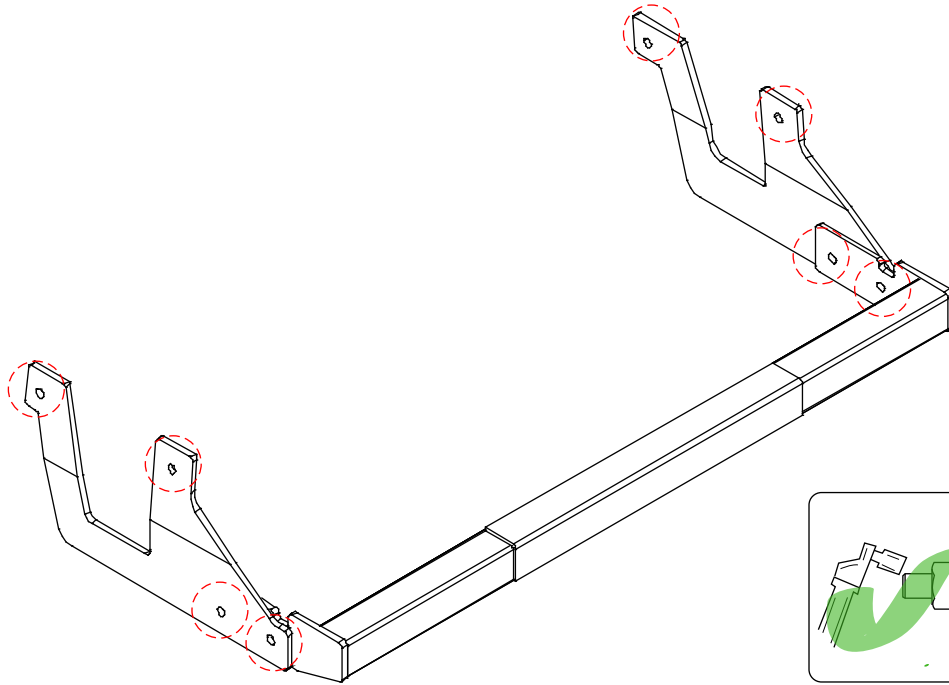




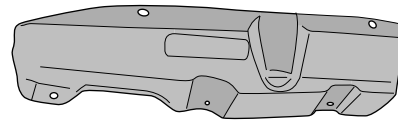
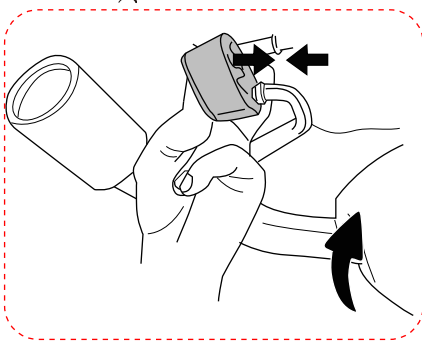
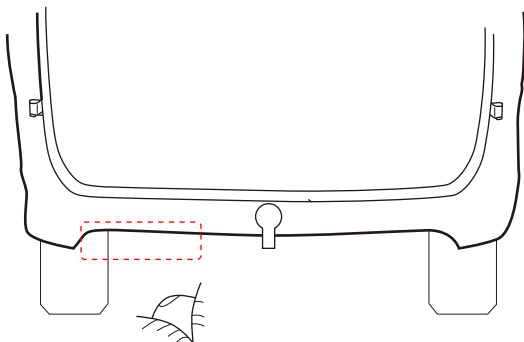
8



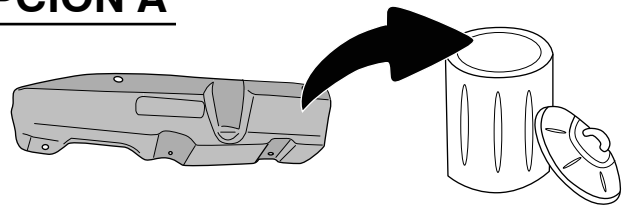
	M6	M8	M10	M12	M14	M16
8.8	10,4Nm	25,0Nm	51,0Nm	87,0Nm	140,0Nm	215,0Nm
10.9	15,5Nm	37,0Nm	75,0Nm	130,0Nm	205,0Nm	310,0Nm
12.9	18,0Nm	43,0Nm	87,0Nm	150,0Nm	240,0Nm	370,0Nm



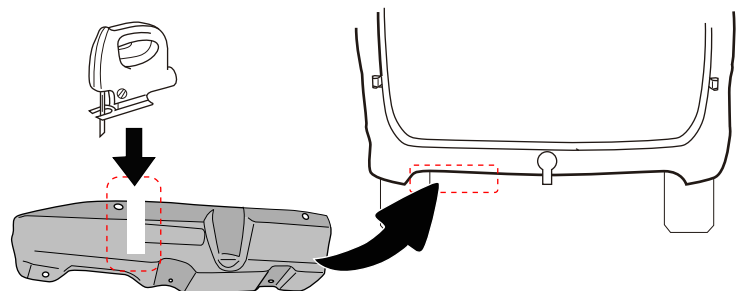
9



OPCIÓN A



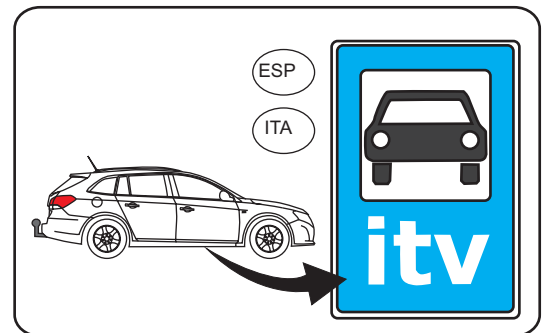
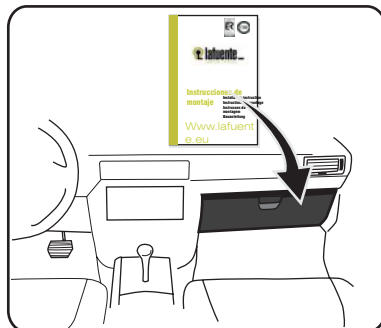
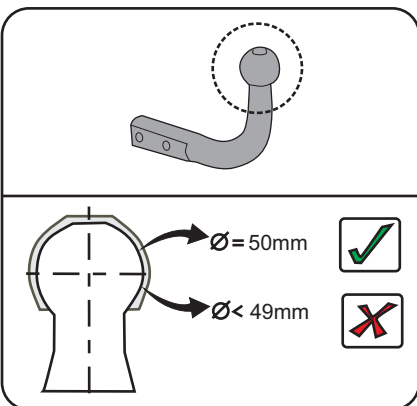
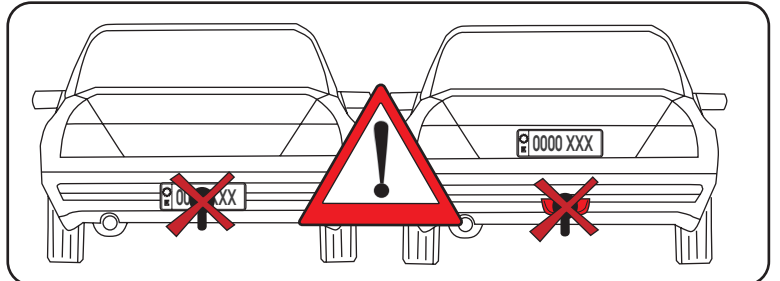
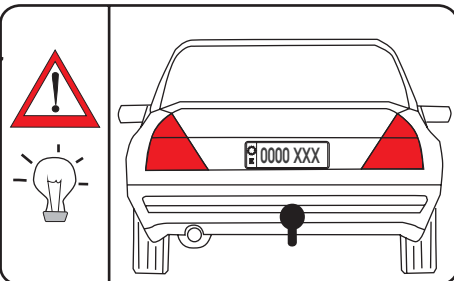
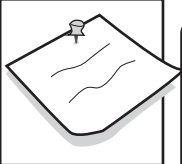
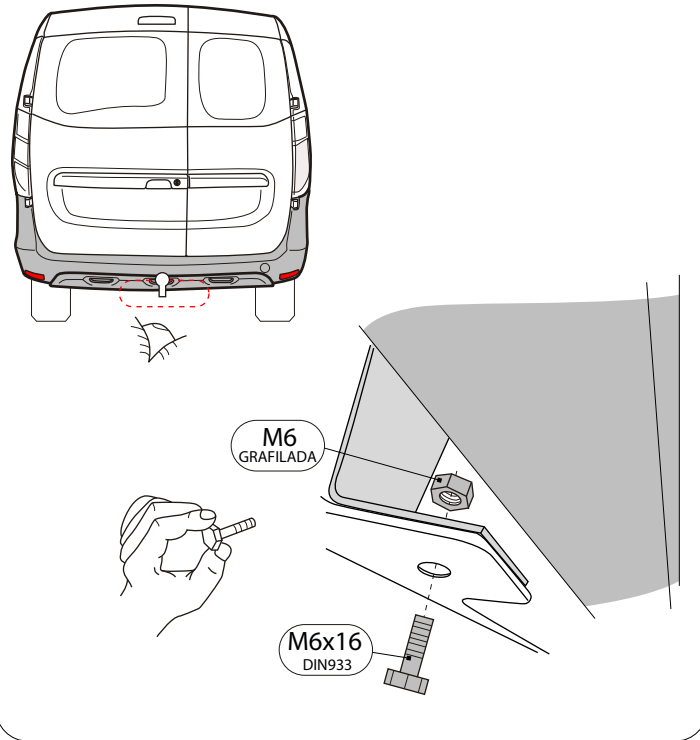
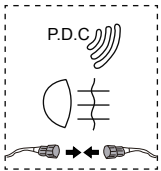
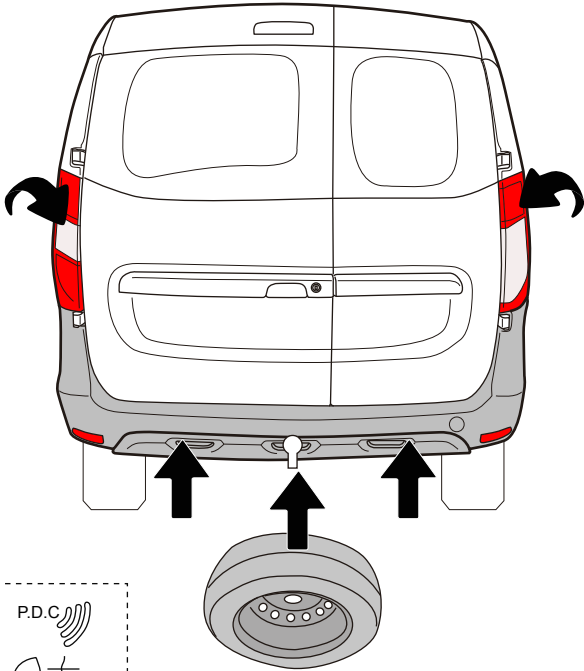
OPCIÓN B



10



DACIA DOKKER



	M6	M8	M10	M12	M14	M16
8.8	10,4Nm	25,0Nm	51,0Nm	87,0Nm	140,0Nm	215,0Nm
10.9	15,5Nm	37,0Nm	75,0Nm	130,0Nm	205,0Nm	310,0Nm
12.9	18,0Nm	43,0Nm	87,0Nm	150,0Nm	240,0Nm	370,0Nm