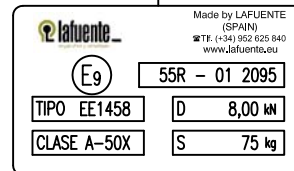
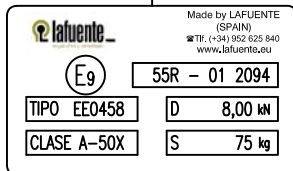
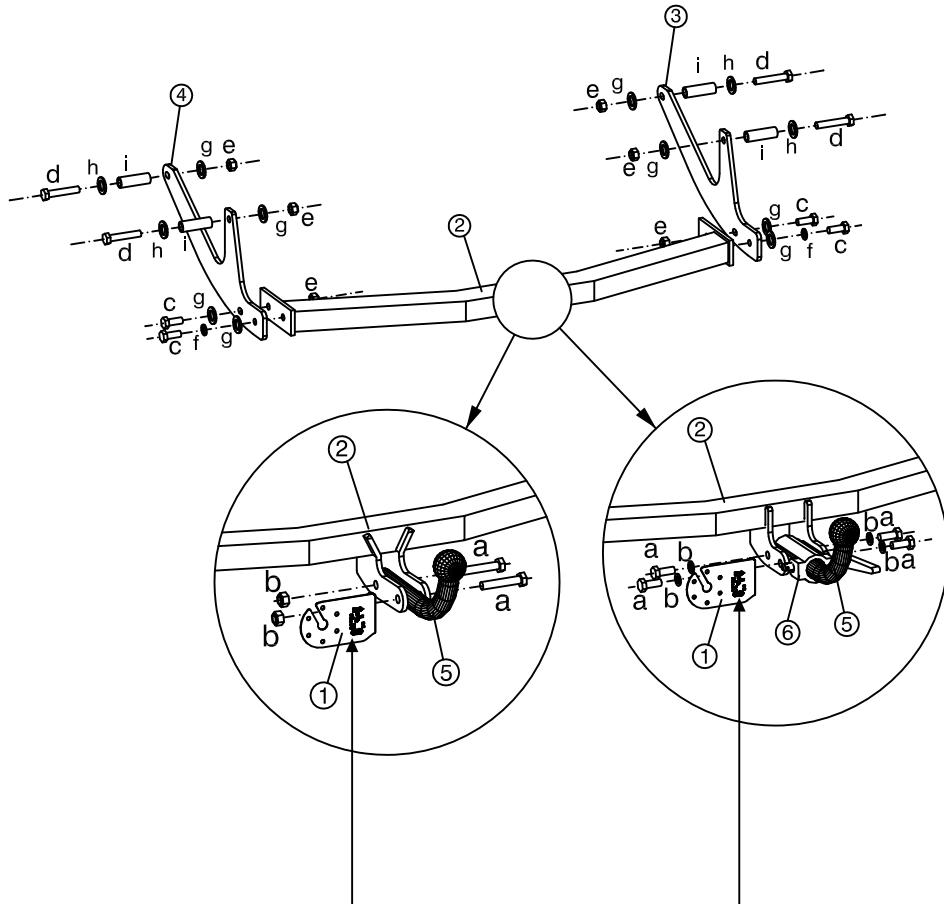
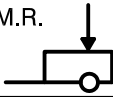



DACIA LOGAN MCV



Nº de homologación
Official approval number
Prüfung Nr.
Nº d'homologation



M.M.R. 	S 	D	Par de apriete para los tornillos Tightening torque for bolts Schrauben Drehmoment Couple de serrage pour vis						
1.600 kg.	75 kg.	8,00 kN	mm	6	8	10	12	14	16
			Nm	10	25	55	85	135	200

Enganche homologado según Reglamento nº 55 CEPE
Hitch officially approved in accordance with Regulation nº 55 CEPE
Geprüfte Kupplung gemäß Reglement nº 55 CEPE
Crochet homologué selon la Règlementation nº 55 CEPE

ELEMENTOS DE UNIÓN / CONNECTION COMPONENTS
DAZUGEHÖRENENDEN TEILEN / ÉLÉMENTS DE RACCORD

BOLA / BALL / KUGEL / BOULE		VEHÍCULO / VEHICLE FAHRZEUG / VÉHICULE	
		c	4 x M10x40 DIN 933 8.8
a	2 x M12x65 DIN 931 8.8	d	4 x M10x90 DIN 933 8.8
b	2 x M12 DIN 985 8	e	6 x M10 DIN 985 8
		f	2 x M10 DIN 127 -
		g	12 x M10 DIN 9021 -
a	4 x M12x25 DIN 933 8.8	h	12 x M12 DIN 9021 -
b	4 x M12 DIN 125 -	i	4 x CASQUILLO Ø 20 L=55 -

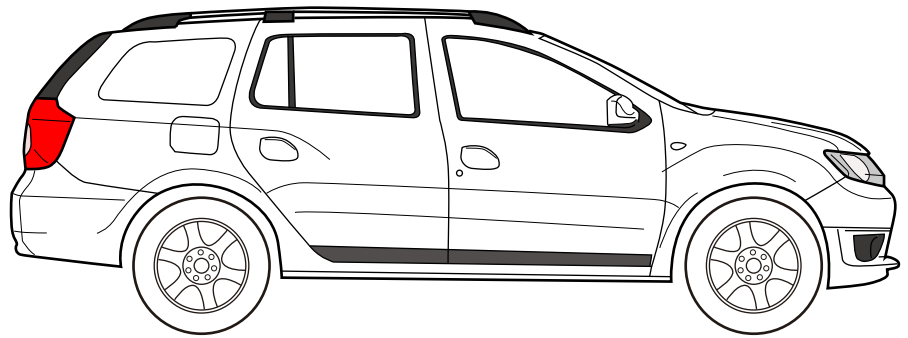
Este documento debe ser presentado en la I.T.V. junto con el certificado de montaje.
HNOS.SÁNCHEZ-LAFUENTE,S.A. no asume ningún tipo de responsabilidad por daños causados por usos inadecuados.



EE0458

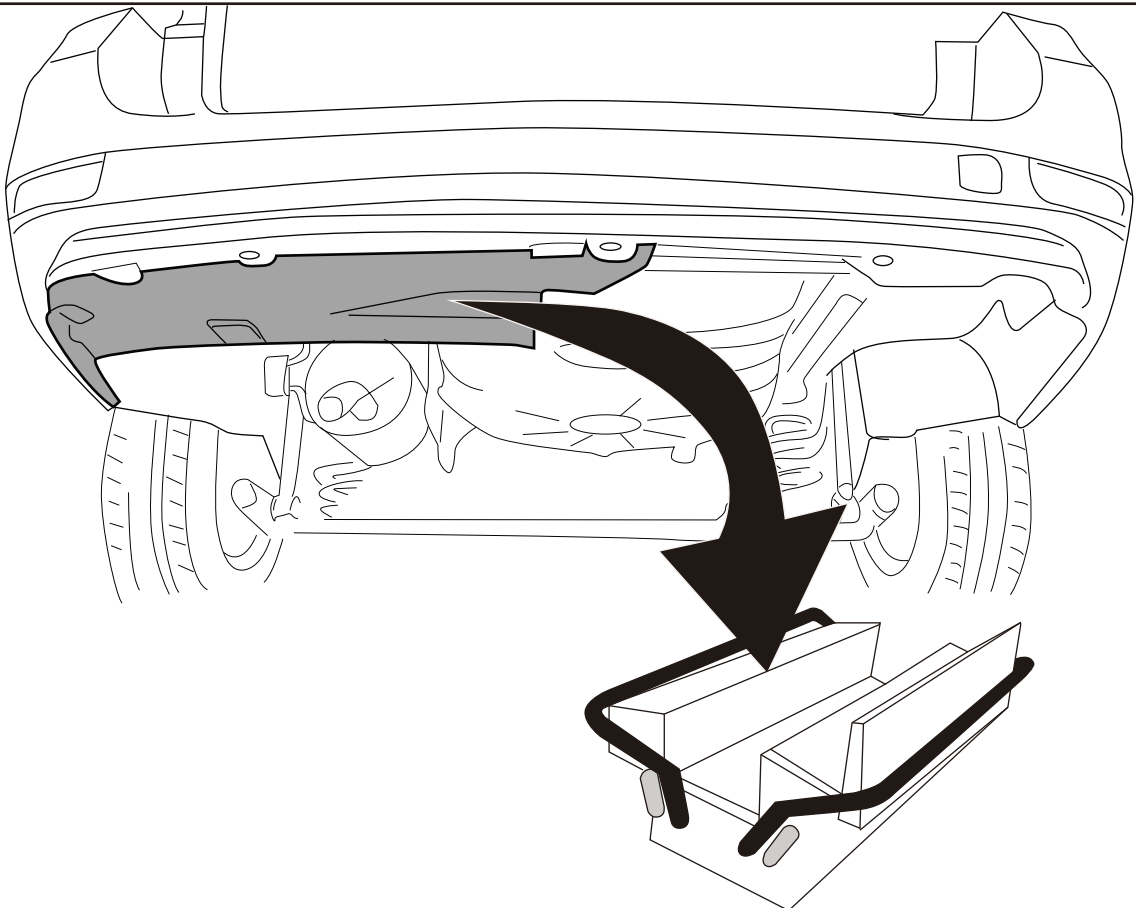


EE1458

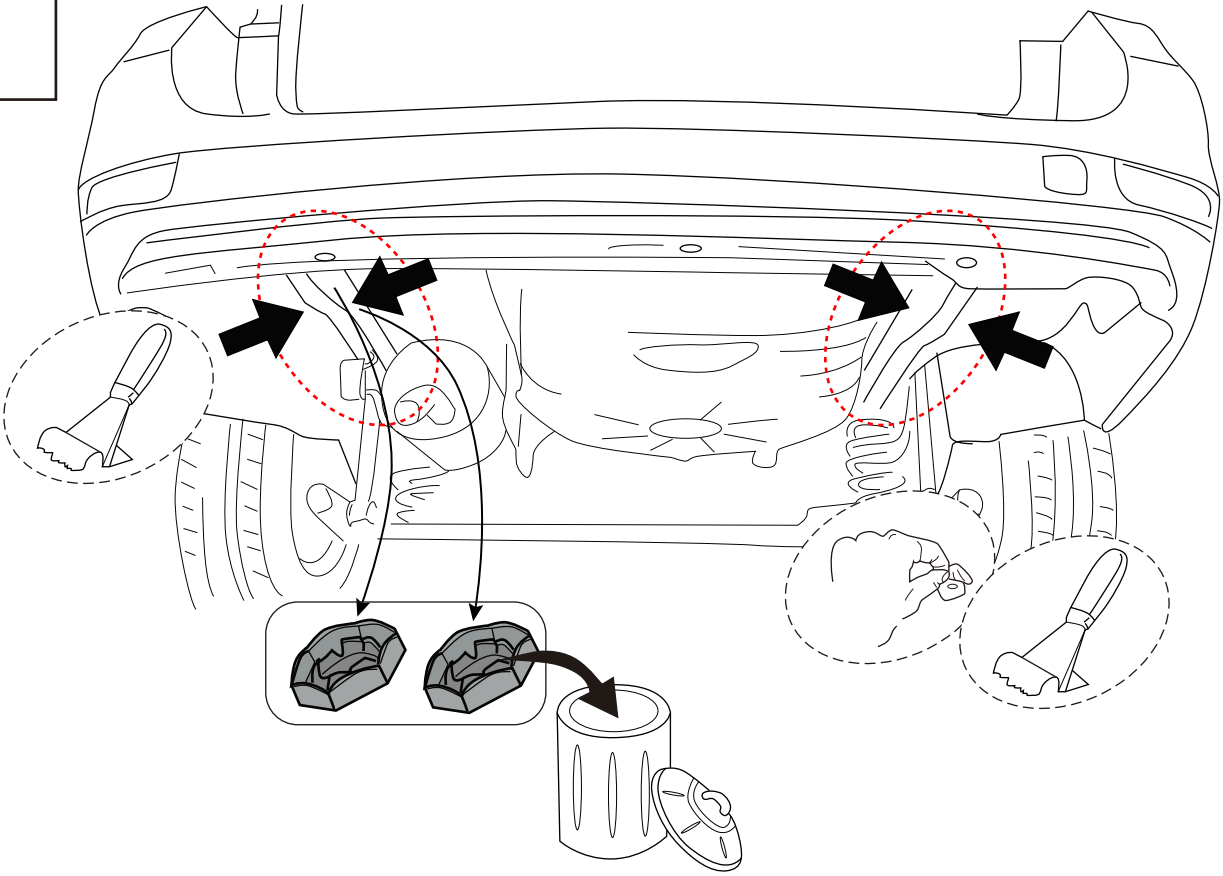


DACIA LOGAN MCV

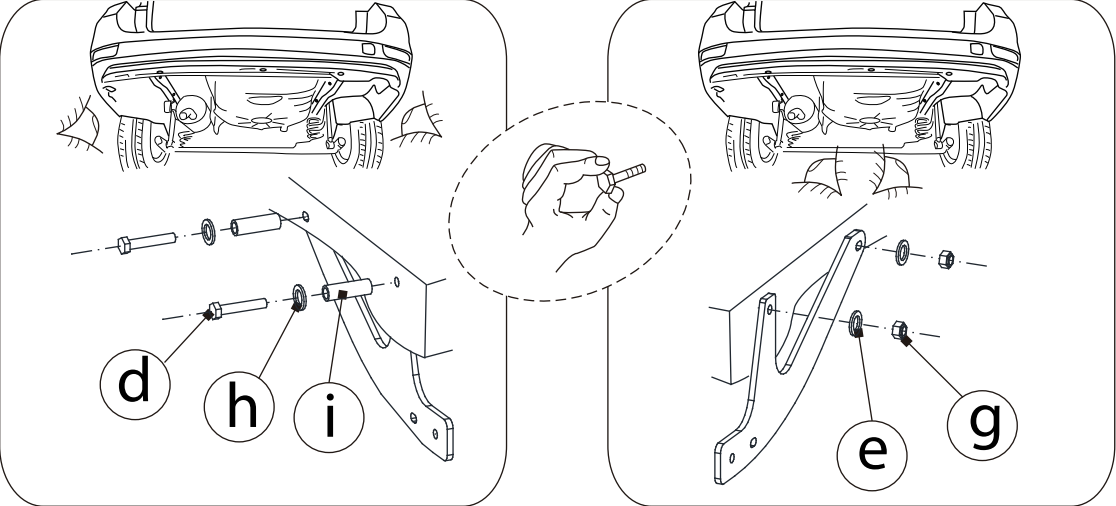
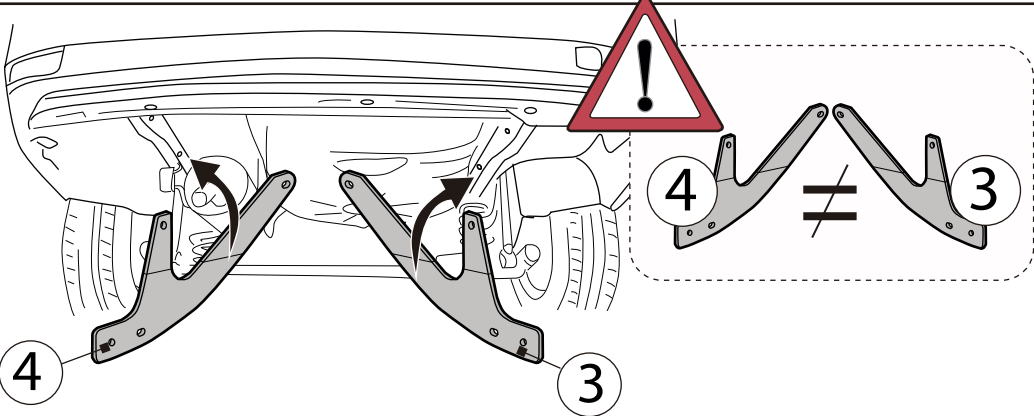
1

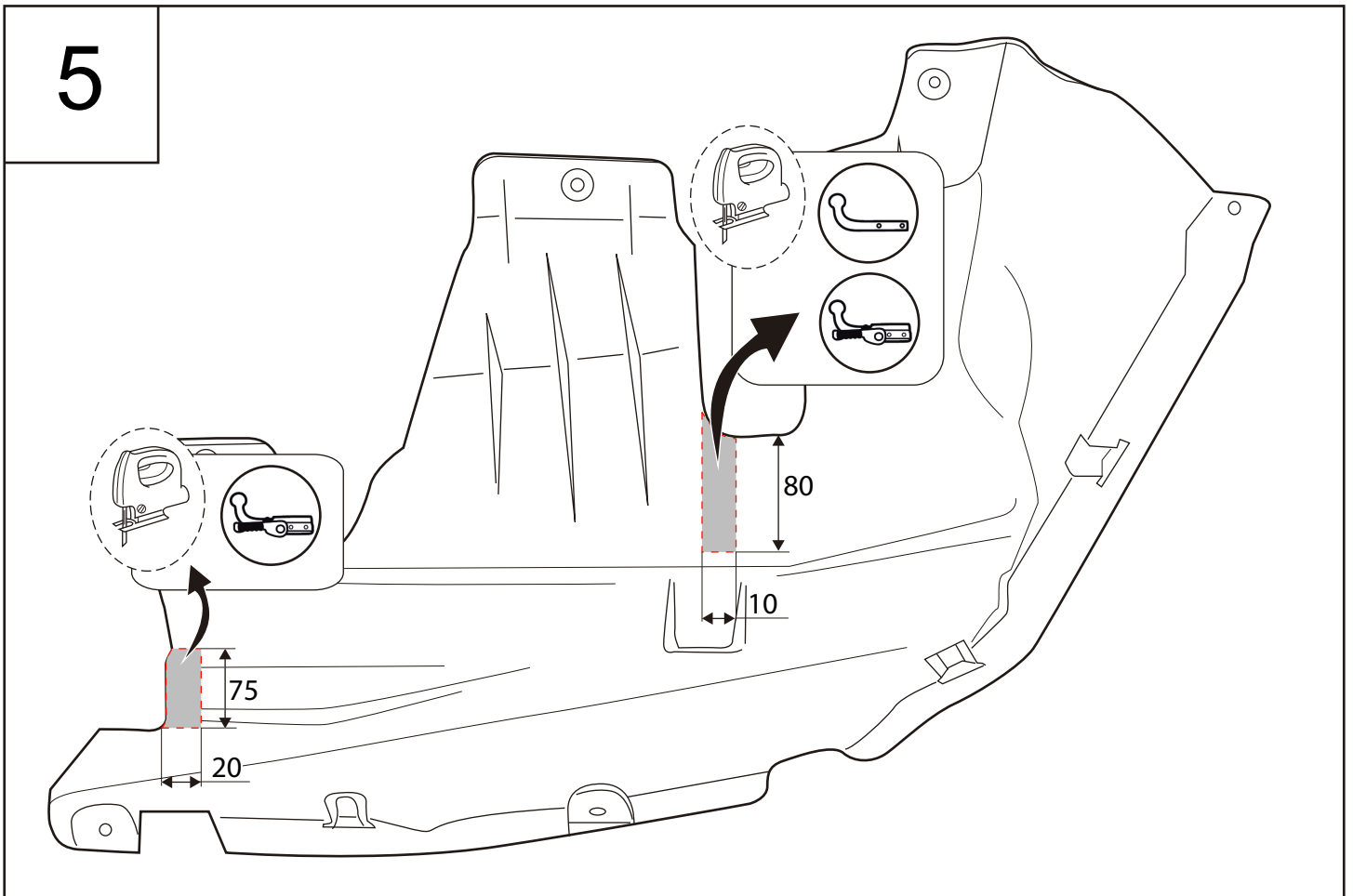
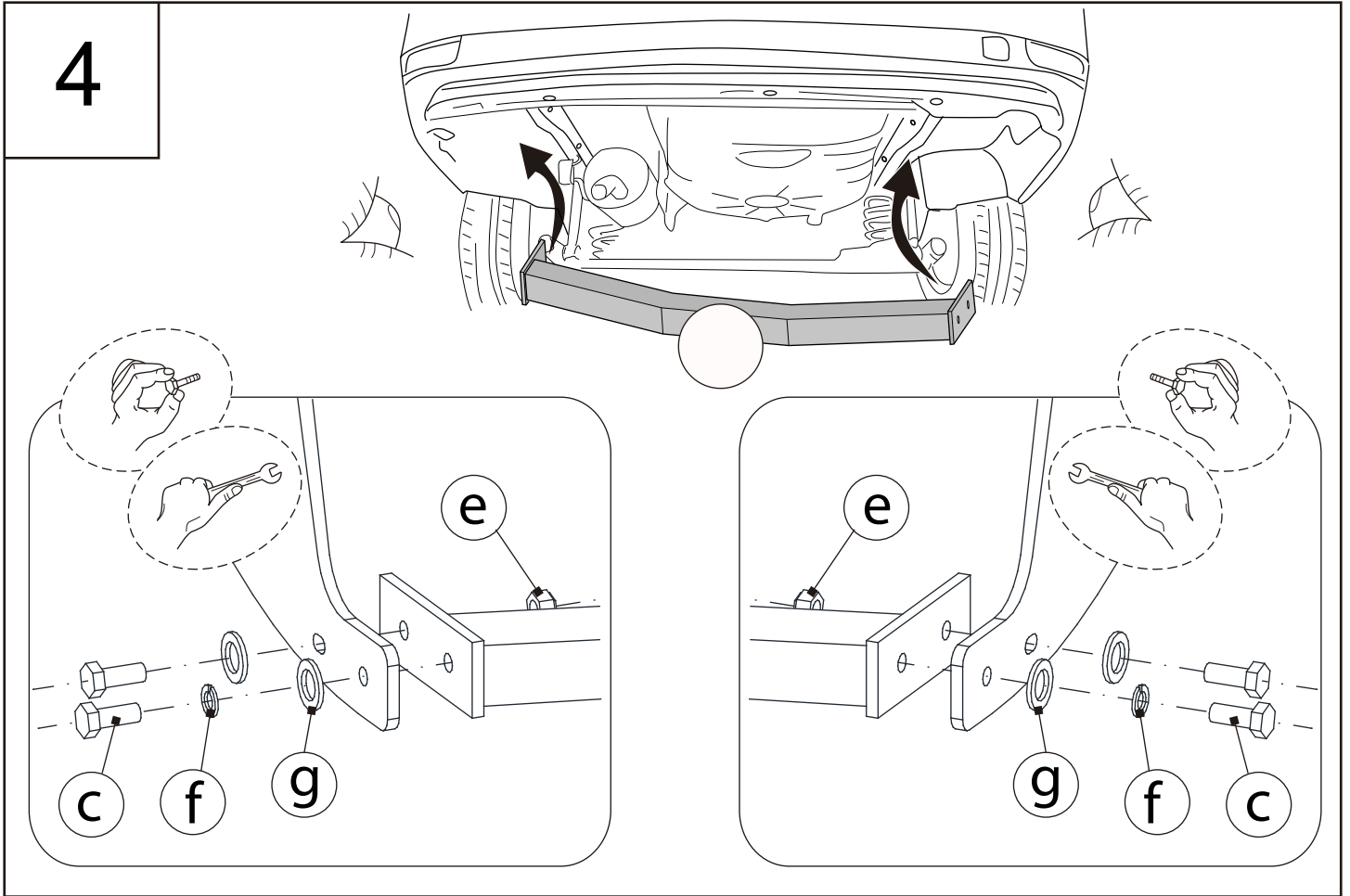


2

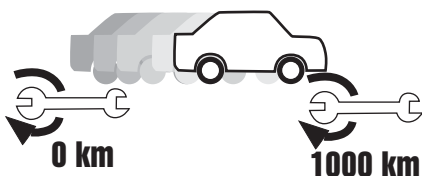
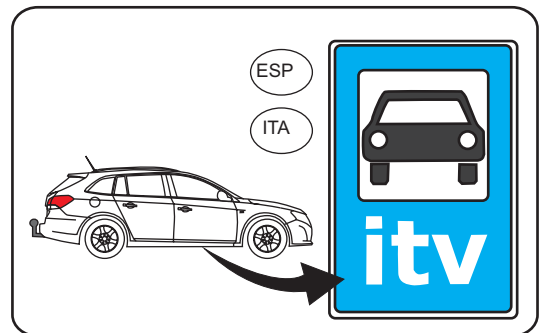
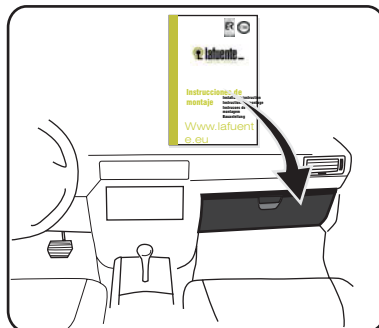
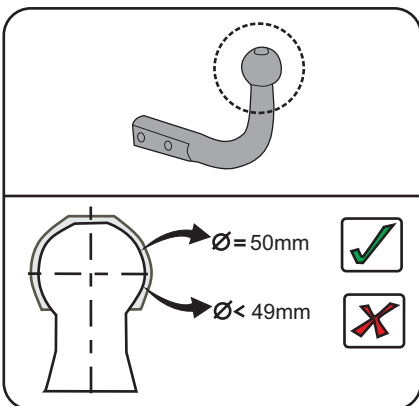
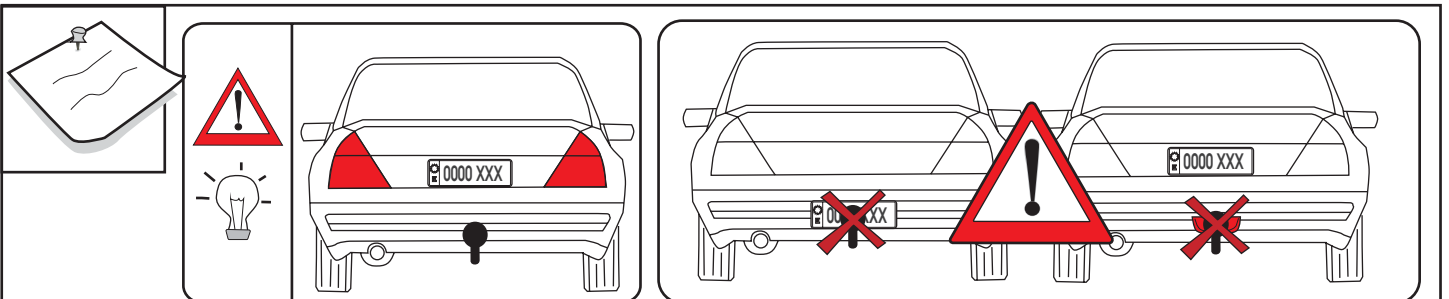
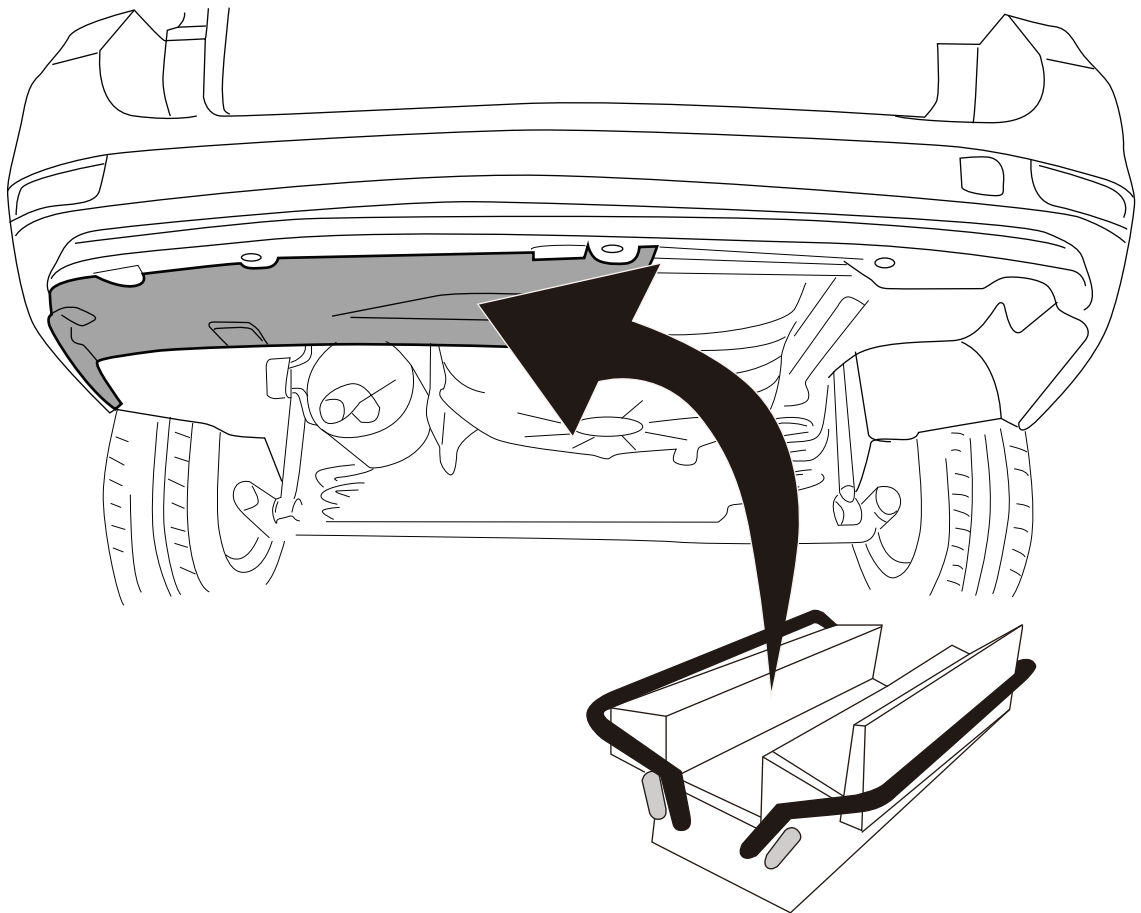


3





6



	M6	M8	M10	M12	M14	M16
8.8	10,4Nm	25,0Nm	51,0Nm	87,0Nm	140,0Nm	215,0Nm
10.9	15,5Nm	37,0Nm	75,0Nm	130,0Nm	205,0Nm	310,0Nm
12.9	18,0Nm	43,0Nm	87,0Nm	150,0Nm	240,0Nm	370,0Nm